



Application

- To transfer clean water with liquid temperature between 0°C and 40°C
- Application in water supply and drainage for factories, mines, municipal facilities as well as field irrigation, ect.

Features

- Strengthened pump body ensures more durable and reliable service
- Better sealing effect by using special mechanical seal
- 5-direction outlet for convenient use
- 20% increased loading quantity thanks to very compact construction design
- Less gasoline consumption

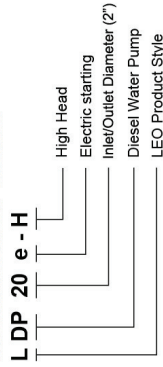
Pump

- Anti-rust cast iron impeller and diffuser
- Max.Suction: 8 m , Suck 5 m needs 120 s
- Inlet/outlet: 2" / 2" x 2x1.5"
- Electric starting

Engine

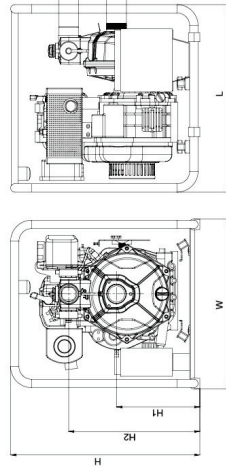
- Single cylinder, 4-stroke, Air-cooled
- Max.power: 8.4 HP
- Rated speed: 3600 rpm
- Reliable engine equipped with low engine oil shut off system

Identification Codes



Technical Data

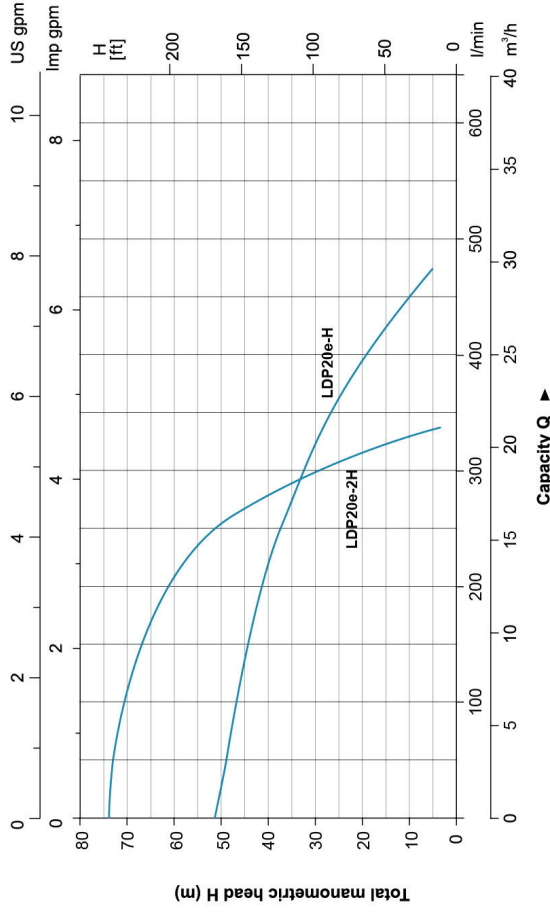
Model	Power HP	Fuel tank L	Engine Oil L	Oil cc	Displacement Q (l/min)	Q (m ³ /h)	H															
							0	5	10	15	20	25	30	35	40	45	50	55				
LDP20e-H	8.4	5.5	1.65	418	52	48.8	42	39	30	10	5	-	-	-	-	-	-	-	-	-	-	
LDP20e-2H	8.4	5.5	1.65	418	74	68.5	52	20	-	-	-	-	-	-	-	-	-	-	-	-	-	-



Dimension

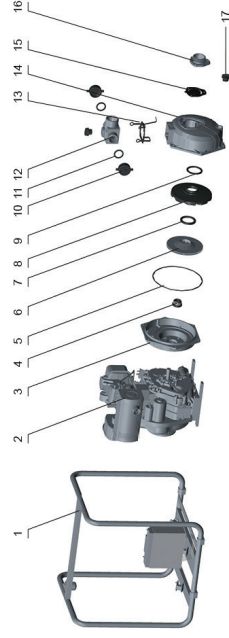
Model	DN1	DN2	2xDN3	L (mm)	W (mm)	H (mm)	H1 (mm)	H2 (mm)
LDP20e-H	2"	2"	1.5"	600	530	620	375	415
LDP20e-2H	2"	2"	1.5"	600	530	620	375	415

Hydraulic Performance Curves



Materials Table

No.	Part	Material
1	Frame	Steel
2	Engine	Aluminum
3	Bracket	Aluminum
4	Mechanical seal	Carbon/Ceramic
5	O-ring	NER
6	Impeller	Aluminum
7	Seal ring	NER
8	Diffuser	H1200
9	Seal ring	NER
10	Pipe blanking cap	PP
11	Seal ring	NER
12	Outlet	Aluminum
13	Gasket	NER
14	Pump body	Aluminum
15	Non-return valve	NER
16	Inlet	Aluminum
17	Filling plug	PAG



Package Information

Model	GW (Kgs)	L (mm)	W (mm)	H (mm)	Quantity (PCS/20 TEU)
LDP20e-H	62.4	630	570	680	108
LDP20e-2H	63.8	630	570	680	108

