

Operation Manual

Pond Pump CQB SERIES

WATERHOUSE - SOUTH AFRICA



Illustration similar, may vary depending on model

Read and follow the operating instructions and safety information before using for the first time.

Technical changes reserved!

Due to further developments, illustrations, functioning steps, and technical data can differ insignificantly.

Updating the documentation

If you have suggestions for improvement or have found any irregularities, please contact us.



Introduction

Thank you for purchasing this quality product.

To minimise the risk of injury we urge that our clients take some basic safety precautions when using this device. Please read the operation instructions carefully and make sure you have understood its content.

Keep these operation instructions safe.

ATTENTION:

The use of this device is allowed on standing water bodies, garden ponds or swimming ponds and their surrounding areas only with fault current protection-switch with a triggering nominal current up to 30 mA (according to VDE 0100 Article 702 and 738).

The device is not suitable for use in swimming pools, paddling pools and other bodies of water where people swim during operation. The operation of the device is not allowed whilst people are in the danger zone. Ask your electrician.

The device is not intended for use by persons (including children) with impaired or limited physical, sensory, and mental abilities or lack of experience and/or real knowledge, unless they are supervised by a person responsible for their safety or have received by this person instructions on how to use the device correctly.

Children should be supervised to make sure that they do not play with the device.

ATTENTION:

- Perform a visual inspection of the device before every use. Do not use the device if the safety appliances are damaged or worn out. Never override safety regulations.
- Use the device exclusively according to the intended purpose stated in the instructions for use.
- You are responsible for the safety of the working environment.
- If the cable or the plug is damaged due to external influences the cable must not be repaired! It must be replaced with a new one. This work can be carried out only by an electrician.
- The voltage indicated on the type plate of the device of 230 V AC must correspond to the existent mains voltage.
- Never lift, carry, or suspend the device by using the power cable.
Make sure that the electrical plug connection is protected from flood and moisture.
Before working on the pond pump disconnect it from the current.
The user is responsible for the compliance with location specific safety and installing regulations. Ask an electrician if you have any question.
Consequential damage arising from flooded rooms caused by dysfunctions of the appliance must be avoided by means of the appropriate measures (installing an alarm system, reserve pump).
- In case of malfunction, the repair work can be carried out only by a qualified electrician.
- The appliance must not run dry or with a completely closed intake port. The manufacturer's guarantee is no longer valid if the damage is caused by dry running.
- The appliance must not be used for swimming pools.
- The device cannot be employed for drinking water circuits.

WARNING:

Read carefully all the safety guidelines and instructions. Non-compliance with the safety rules and regulations can lead to an electric shock, fire, and/or serious injury.

Keep the instructions and the safety guidelines in a safe place in case you need them in the future.

Stability

- The max. temperature of the transported liquid should not exceed +35 °C in permanent operation.

- The transport of aggressive fluids (acids, bases, etc.) as well as of abrasive substances (for example sand) must be avoided.

Electrical connection

- The electrical connection takes place via an electric safety socket of 230 V ~ 50 Hz. Fuse protection at least 10 A.
- The engine is protected against overloading or blocking by means of a built-in motor protection. In case of overheating, the pump is turned off automatically due to the overheat protection, and after having cooled down, the pump is automatically started.

Power connection

The pond pump is equipped with a safety plug. The device is designed for connection to an isolated ground receptacle with 230 V~50 Hz. Make sure that the socket outlet is sufficiently fused (at least 6 A) and safe. Insert the plug in the socket outlet and the pond pump is ready for use.

 **Note:**
Installation

Please put the pump under water and make sure that no water may get into the socket.

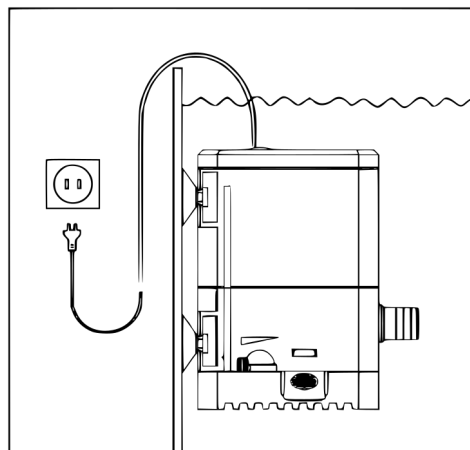


Figure 1

The pump is to be installed as follows: in a fixed position with fixed or flexible hose.

Use as submersed pump (see Fig. 1)

Immerse the pump into the pond water so that it is filled with water.

To prevent the filter from prematurely blocking, position the pump above the pond mud.

The pump is started by plugging in the mains plug.

Operation

After having read the installation instructions carefully, you can start the new pump if you note the following aspects:

1. Check if the pressure pipes have been installed properly.
2. Make sure that the electrical connection is 230 V~50 Hz.
3. Check if the socket works properly.
4. Make sure that moisture or water never reaches the mains connection.
5. Install the pump beneath the water surface.
6. Avoid that the pump runs dry.

7. Do not use the pump without filter basket, that protects it from large impurities that can block the pump.

Hints for maintenance

The pond motor pump is a maintenance-free and a practice-proven quality product that was subjected to rigorous final inspections. For a long working life and continuous operation, we recommend regular checking and proper care on a weekly basis.

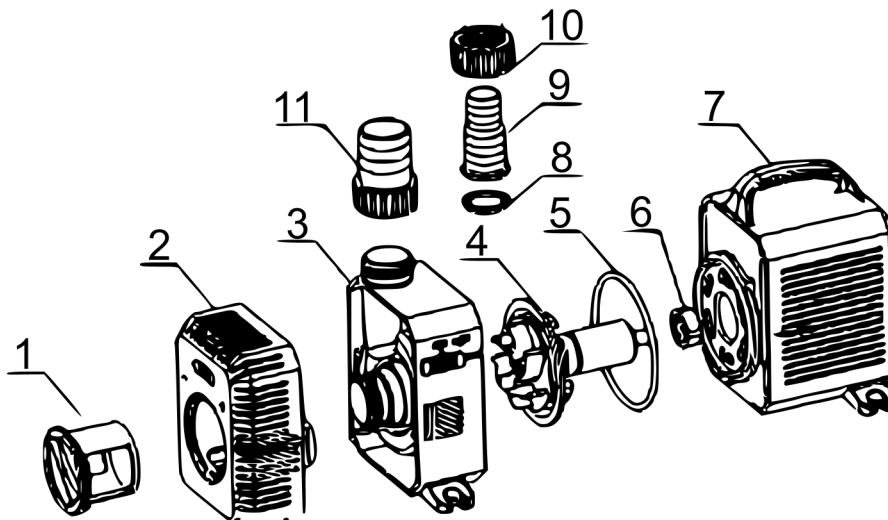
Overload protection

The pump has an integrated overheat protection. After the pump has been stopped by the overheat control device, it must cool down for a while before being able to run again. In case it does not run again by itself, the following checks shall be made:

Could the pump cool down sufficiently after having been stopped by the overheat protection?

- Is the water supply sufficient? > Improve the water supply!
- Is the filter contaminated? > Clean it (see below)!
- Is the hose or the pipe blocked? > Clean them!
- Is the hose broken, too long? > Check, replace, shorten!

Main components



No	Name	No	Name	No	Name	No	Name
1	Adjuster*	4	Rotor subassembly	7	Motor body	10	Outlet nut
2	Filter basket	5	O-ring	8	Seal	11	1 1/4" outlet
3	Pump housing	6	Bearing	9	Outlet		

* Depending on the model. The models 50199–50216 are adjustable, the models 50217–50220 cannot be adjusted.

Wintering

1. Take the pump out of the water and disconnect it from the power supply.
2. Clean the pump as described in the instructions.
3. Check the pump for damage such as cracks in the housing.
4. Please store the pump under frost-free condition and, if possible, in a container with water.

Maintenance and cleaning



Image 1:

Adjust the flow rate.

Image 2:

Turn the filter case in the direction of arrow, then take it out.

Image 3:

Press the blue button in order to open the filter housing.

Image 4:

Keep hold on the blue switch and rotate the flap on the motor housing in the direction of arrow.

Image 5:

Pull the impeller and the pump shaft out of the housing to clean them.

Image 6:

Make sure that the O-ring is properly mounted again before you reassemble the pump.

Technical data

Item number	Model	Power input (W)	Pumping head (m)	Max. flow rate (ℓ/h)	Min. flow rate (ℓ/h)	Size (mm)
50199	CQB-2800	10	2.0	3000	1070	172 × 113 × 126
50201	CQB-3800	20	2.8	3600	1200	172 × 113 × 126
50203	CQB-4800	30	4.0	4500	1365	172 × 113 × 126
50209	CQB-5800	40	4.8	5200	1415	172 × 113 × 126
50211	CQB-5000	30	3.2	5000	1680	188 × 131 × 149
50213	CQB-6000	40	4.2	6000	1950	188 × 131 × 149
50215	CQB-7000	50	4.6	7000	2230	188 × 131 × 149
50216	CQB-8000	70	5.6	8000	2270	188 × 131 × 149
50217	CQB-10000	80	6.0	10,000	2200	208 × 138 × 158
50218	CQB-12000	100	6.5	12,000	2250	208 × 138 × 158
50219	CQB-14000	120	7.0	14,000	2300	208 × 138 × 158
50220	CQB-16000	140	7.5	16,000	2350	208 × 138 × 158

