

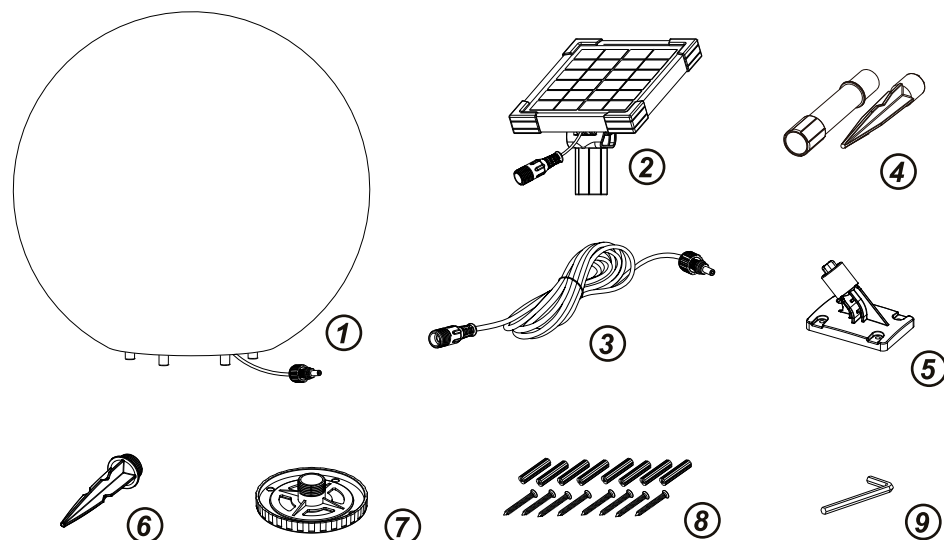
SOLAR GARDEN LIGHT USER'S MANUAL

Item No.: XSOL-BALL

1. OVERVIEW

- 1) The solar garden light kit is designed for garden illumination and/or decoration, and is powered by solar energy. In order to make the ball light work by solar energy, the solar battery unit needs to be placed in the sunlight with its solar cells facing the midday sun as much as possible.
- 2) The power supply of the ball light is provided by a built-in battery which is charged by the solar panel in the daytime.
- 3) The ball light will be automatically switched on at night or in darkness.

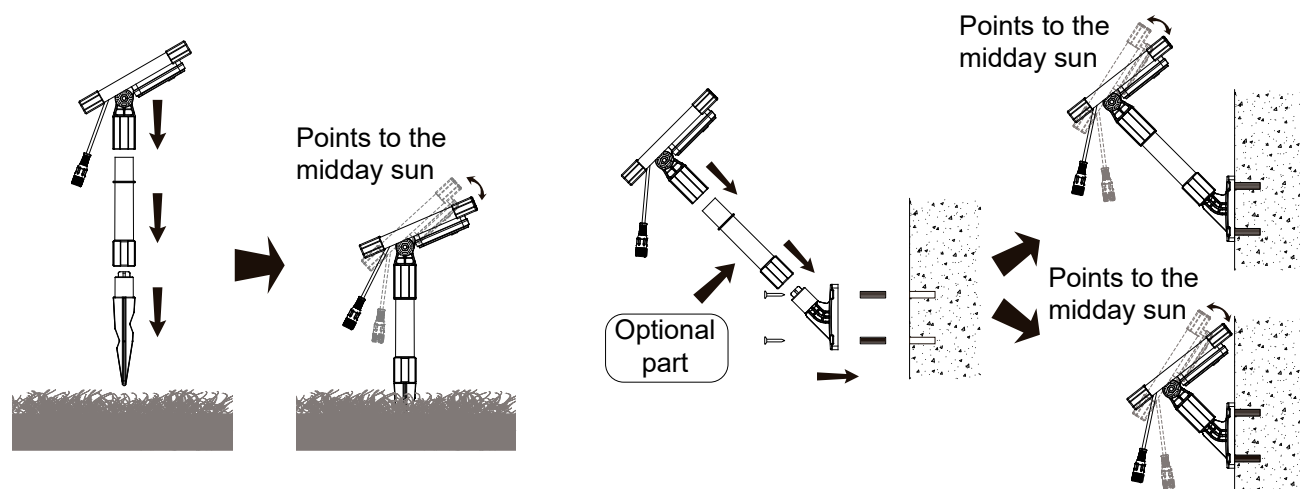
2. COMPONENTS



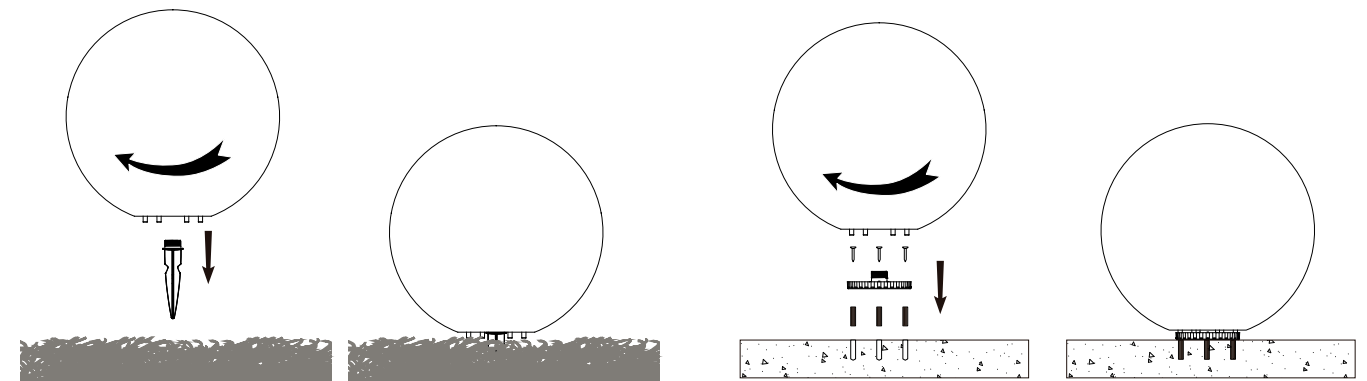
- 1) Ball light 2) Solar battery unit 3) 5 meters extension cord 4) Ground spike for solar battery unit
5) Bracket for solar battery unit 6) Ground spike for ball light 7) Bracket for ball light
8) Installation pieces 9) Allen wrench

3. ASSEMBLING

- 1) Unpack all components carefully.
- 2) To install the solar battery unit on the ground, find a sunny place that is shadow-free all day long and install the solar battery unit by the ground spike.
To install the solar battery unit on walls, wooden fences or other vertical planes, fix the wall bracket onto the vertical plane with screws as shown in the below figures. (When needed, the enclosed plastic expansion anchors can be used to anchor the screws on hard surfaces). If the solar battery unit can't stand steadily, tighten the joint by using the spanner (Don't use unnecessary force to avoid damage).



- 3) The solar panel should be faced towards the midday sun as shown in the above figure to maximize the time of its exposure to sunlight throughout a day.
- 4) Find a proper place within the reach of the 5 meter long extension cord from the solar battery unit to install the ball light. Insert the ball light ground spike properly into the earth if it is a lawn or fix the bracket on the place by the screws if it is concrete or wooden floor. (When needed, the enclosed plastic expansion anchors can be used to anchor the screws on hard surfaces). Then screw the ball light onto the installed ground spike or bracket.
- 5) Electrically connect the ball light to the solar battery unit with the 5 meter long extension cord. Tighten the screw caps for water protection to complete the installation.

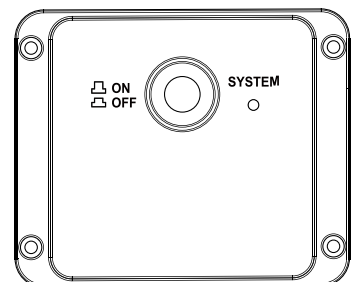


Note:

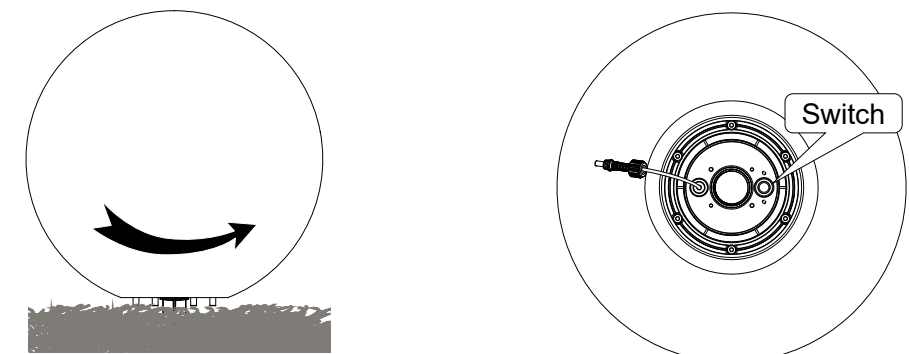
- ★ The ball light will be automatically switched on when the solar panel feels the darkness. Please make sure the solar panel stays away from any artificial light sources, as the light from those sources may stop it from feeling the darkness properly.
- ★ The system will automatically cut off the charging current while the battery is charged to its high voltage limit (fully charged).
- ★ The ball light can stay in rain, but make sure it is not submerged into water, it is not completely water-proof.

4. OPERATION

- 1) Turn on the system by pressing the On/Off switch to "On" position at the back of solar battery unit, the "SYSTEM" indicator could be in one of the below colors:
Green: The battery is charged and solar panel feels the darkness, the ball light illuminates.
Yellow: The solar panel feels the brightness, the battery is being charged, the ball light is off.
Red: The battery is flat, the ball light is off.



- 2) The ball light works in one of the two patterns, either color-changing pattern or fixed color pattern. Under the color-changing pattern, the color of the ball light automatically cycles through 9 different colors following the sequence of Cold White, Red, Yellow, Green, Cyan, Blue, Purple, Warm White, and Pure White. A color stays for one minute, then the next color takes over gradually. Under the fixed color pattern. The ball light will stay in one particular color all the time.
- 3) When needed, switch the light working pattern by pressing the button on the bottom of the light. To access the button, the ball light may need to be unscrewed from the base or the ground spike as shown in the figure below. Make sure to disconnect the extension cord from the ball light before unscrewing.
- 4) One press on the button will switch the current pattern to another. When it is in color-changing pattern, one press will stop the color changing and the ball light will stay on the existing color. When it is in fixed color pattern, one press will resume the color change cycle from the existing color.

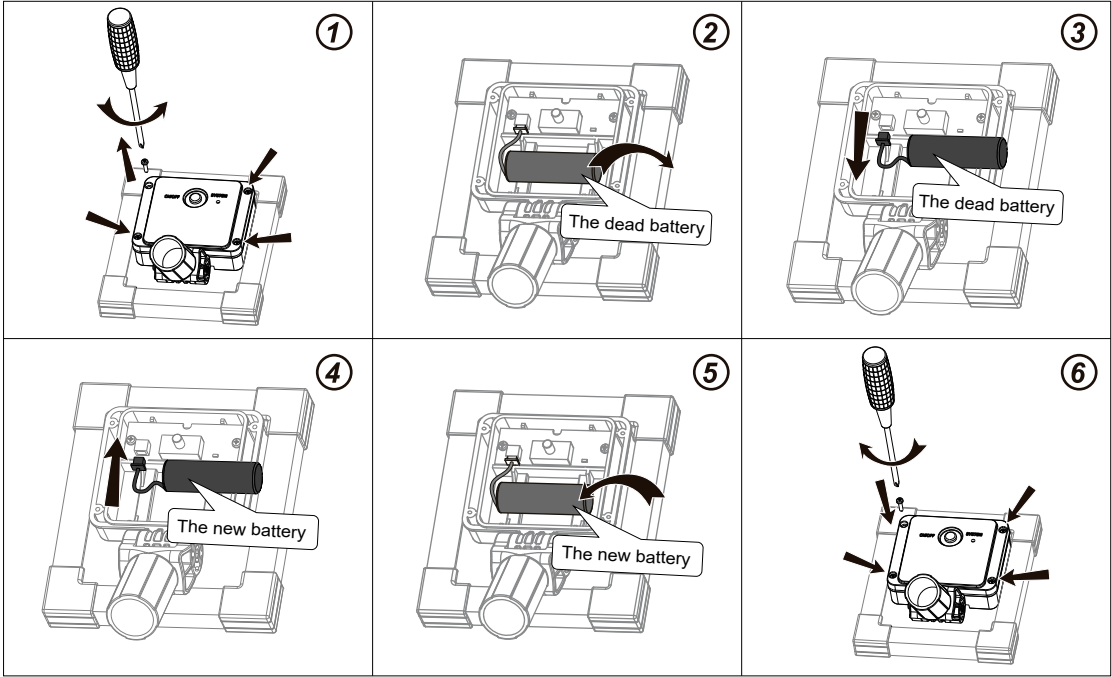


5. CAUTIONS

- 1) Any altering of the product itself or changing of the components voids warranty.
- 2) Do not connect the ball light to any AC power supply directly; it's designed ONLY for DC power.
- 3) Do not strike the solar module.

6. TROUBLE SHOOTING

- ★ The ball light does not turn on at night: the solar panel may be exposed to any kind of artificial light source at night, so the solar panel feels the brightness and keep the light off.
- ★ The ball light only works for a short period of time at night: the battery cell inside may run out of its service life, replace the battery with a new one following the schematic below:



7. TECHNICAL DATA

Ball light size	30 CM
Material of ball light	PP
Peak power of solar module	2 W / 6 V
Rechargeable battery	LiFePO4, 3.2 V, 1500 mAh
Operation voltage	DC 3.2 V
Lighting colors	Cold white, Red, Yellow, Green, Cyan, Blue, Purple, Warm white, Pure white
Length of the extender	5 M (16.4 FT)
Average working hours per night	> 12 Hours

CONTACT US

South Africa
www.waterhouse.co.za
Phone: +27 (0)11 466 8250
Email: shop@waterhouse.co.za



GO OUTSIDE & PLAY

SEND US A PICTURE OF YOUR SOLAR POND SETUP
& WE WILL FEATURE YOUR WATER SPACE!



@waterhousepumps